

# Mecmesin

testing to perfection

# Emperor™ Lite



data acquisition  
software

Force & Torque  
Test Solutions



Transform your test data from simple numbers into  
meaningful graphs with results and reports



# Emperor Lite

Release the full potential of your test stand or force/torque gauge...

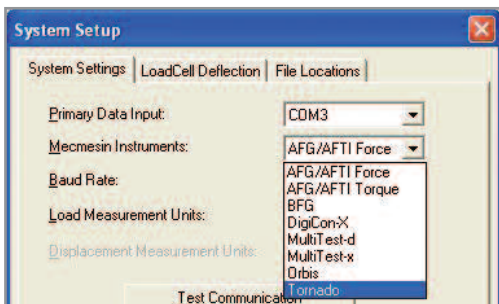
To get the most from your quality control testing, sometimes simple figures are not enough. Emperor Lite takes your test results to the next level of assessment.

An easy-to-use data acquisition software package, Emperor Lite connects to your test system or instrument, plotting test data directly onto your PC screen. It provides instant access to a range of analysis tools, enabling you to fully assess your products test performance - From pinpointing weaknesses in design before beginning production, to identifying critical quality points to maintain during the manufacturing process.

Emperor Lite can be used with a range of Mecmesin systems and instruments,

<u>Force</u>	<u>Instruments</u>	<u>Torque</u>	<u>Test Systems</u>
Advanced Force Gauge (AFG)		Tornado	MultiTest-d
Basic Force Gauge (BFG)		Orbis	MultiTest-x
Advanced Force & Torque Indicator (AFTI)			Vortex-d

## Emperor Lite Features



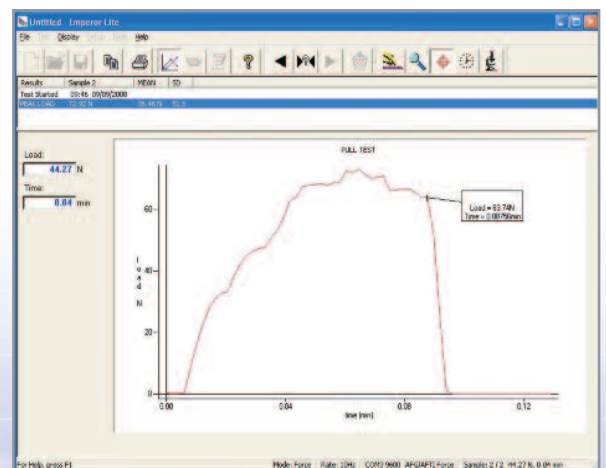
Software setup couldn't be easier...

- Select from a choice of language options
- Choose the Mecmesin instrument you are using
- 'One click' to automatically configure the software

## A simple-to-use graphical interface...

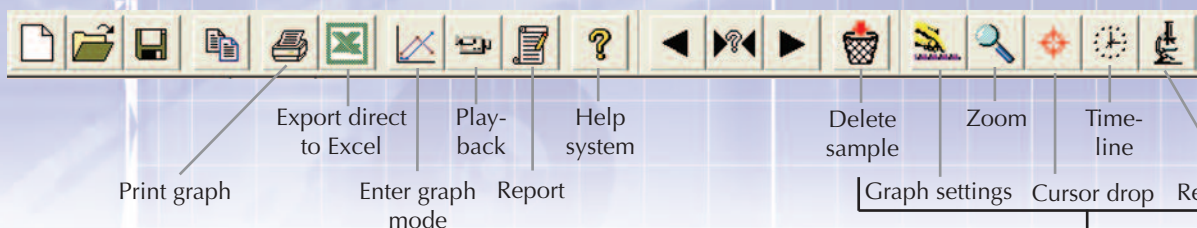
- Data is plotted 'live'\* on screen producing a clear, easy-to-read graphical trace on your PC screen
- Overlay multiple curves for comparative analysis
- Simple customisation allows annotations and titles to be added to the graph
- Zoom and timeline functions for viewing areas of interest in greater detail
- Test results immediately displayed on screen and option to export data automatically at end of test

\* MultiTest-x plotted post-test

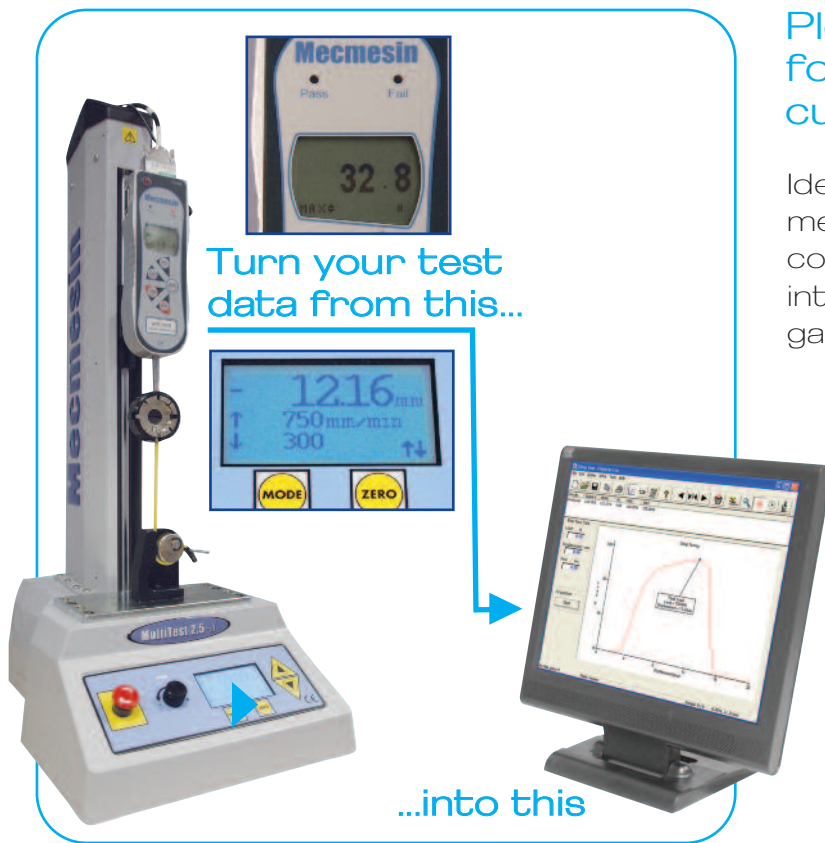


## The toolbar...

- The toolbar simplifies testing by helping you navigate efficiently to key features.



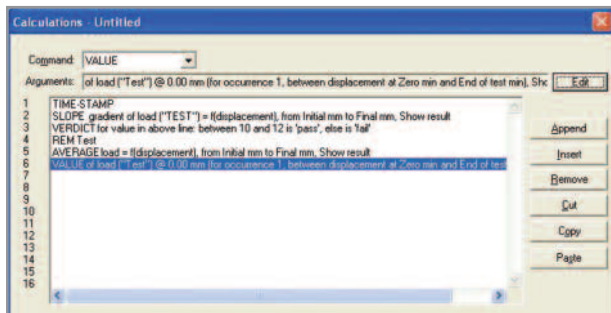
Only visible when 'Enter Graph Mode' has been selected



## Plot force/torque vs time or force/torque vs displacement curves...

Ideally suited for both force and torque measurements, Emperor Lite software communicates via a bi-directional RS232 interface enabling it to be used with gauges and test stands.

- ✓ View test 'live' on PC screen
- ✓ Perform multiple calculations e.g. peak, trough and average
- ✓ Easily identify whether sample meets pass/fail criteria
- ✓ Produce summary test reports with graphical traces
- ✓ Available in multiple languages



## Calculations performed easily...

Select from an extensive list of common calculations within the software database;

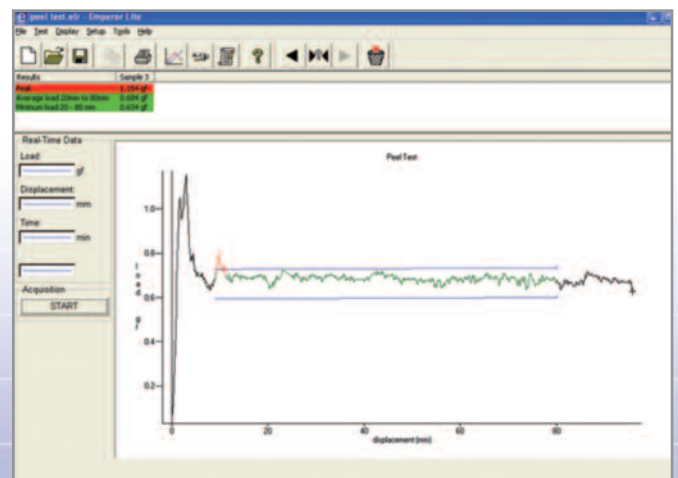
- Peak
- Trough
- Average
- Area under curve
- Slope
- Value at
- Tolerance verdict
- Load/Displacement at Break
- Plus many more...

## Data analysis tools at your fingertips...

- Colour-coded results give immediate indicators to easily identify pass/fail scenarios.
- Upper and lower tolerance bands can be set to visually show whether product samples fall within a defined specification.

## Summary test report...

- Print the graph and test results for a quick record.



## Exporting to other software and peripheral devices...







- Use 'export data' function to transfer information to other packages (e.g. Microsoft® Excel or SPC packages) for further analysis.

## Help when you need it...

- Comprehensive Help system available at all points within the programme.

# Mecmesin

testing to perfection

Force Testing Products		Torque Testing Products		
	<b>Test equipment</b> <b>Test measurement</b> <b>Live data transmitted</b> <b>Control over test</b>	<b>AFG &amp; BFG</b> <b>Force vs Time</b> <b>Yes</b> <b>No</b>	 <b>Test equipment</b> <b>Test measurement - Force - Torque</b> <b>Live data transmitted</b> <b>Control over test</b>	<b>AFTI</b> <b>Force vs Time</b> <b>Torque vs Time</b> <b>Yes</b> <b>No</b>
	<b>Test equipment</b> <b>Test measurement</b> <b>Live data transmitted</b> <b>Control over test</b>	<b>MultiTest-d used with AFG or BFG</b> <b>Force &amp; Displacement</b> <b>Yes</b> <b>No</b>	 <b>Test equipment</b> <b>Test measurement</b> <b>Live data transmitted</b> <b>Control over test</b>	<b>Orbis &amp; Tornado</b> <b>Torque vs Time</b> <b>Yes</b> <b>No</b>
	<b>Test equipment</b> <b>Test measurement</b> <b>Live data transmitted</b> <b>Control over test</b>	<b>MultiTest-x</b> <b>Force &amp; Displacement</b> <b>No (test results sent after test is completed)</b> <b>Yes (from test stand)</b>	 <b>Test equipment</b> <b>Test measurement</b> <b>Live data transmitted</b> <b>Control over test</b>	<b>Vortex-d used with AFTI</b> <b>Torque &amp; Angular Displacement</b> <b>Yes</b> <b>No</b>

\* See datasheet 431-267 for interface cables required

## SPECIFICATIONS

Computer required	50MB available HDD, CD-ROM plus 2 available USB ports
Operating System	Windows 98SE / 2000 / ME / XP / VISTA
Data Output	LPT/USB (Printer port) ASCII file (Export direct to Excel, SPC package etc)
Data Acquisition Speed	Gauge/Test stand dependant: between 1-50Hz
License Protection	Yes, via USB dongle
Force Units	kN, N, mN, kgf, gf, lbf, ozf
Torque Units	N.m, N.cm, mN.m, kgf.cm, gf.cm, lbf.ft, lbf.in, ozf.in
Distance Units (angle)	mm, in (revs, degrees)
Data which can be directly plotted/accumulated	Force vs Time, Torque vs Time, Force vs Displacement, Torque vs Angle
Display multiple tests	Yes, up to 8 traces can be overlaid
Print options	Yes - graphs, raw data, test report
Export to other PC software	Yes as ASCII file (comma, tab delimited or direct to Excel)

Contact us now for further information and a free demonstration



DISTRIBUTOR STAMP

Head Office	North America	Asia	China
<b>Mecmesin Limited</b> Newton House, Spring Copse Business Park, Slinfold, West Sussex, RH13 0SZ, United Kingdom, e. sales@mecmesin.com t. +44 (0) 1403 799979 f. +44 (0) 1403 799975	<b>Mecmesin Corporation</b> 45921 Maries Road, Suite 120, Sterling Virginia 20166, U.S.A. e. info@mecmesincorp.com t. +1 703 433 9247 f. +1 703 444 9860	<b>Mecmesin Asia Co. Ltd</b> 91/1 Chaiyo Building, 11th Floor, Room 1106, Rama 9 Road, Huaykwang, Bangkok, 10310, Thailand e. sales@mecmesinasia.com t. +66 2 247 46 81 f. +66 2 247 46 82	<b>Mecmesin (Shanghai) Pte Ltd</b> Unit 1308, Da Lian Road, No 970, (Hi Shanghai Building 9), Yang Pu District, Shanghai, People's Republic of China e. sales@mecmesin-china.com t. +86 21 3377 1733 / 1755 f. +86 21 3377 1766